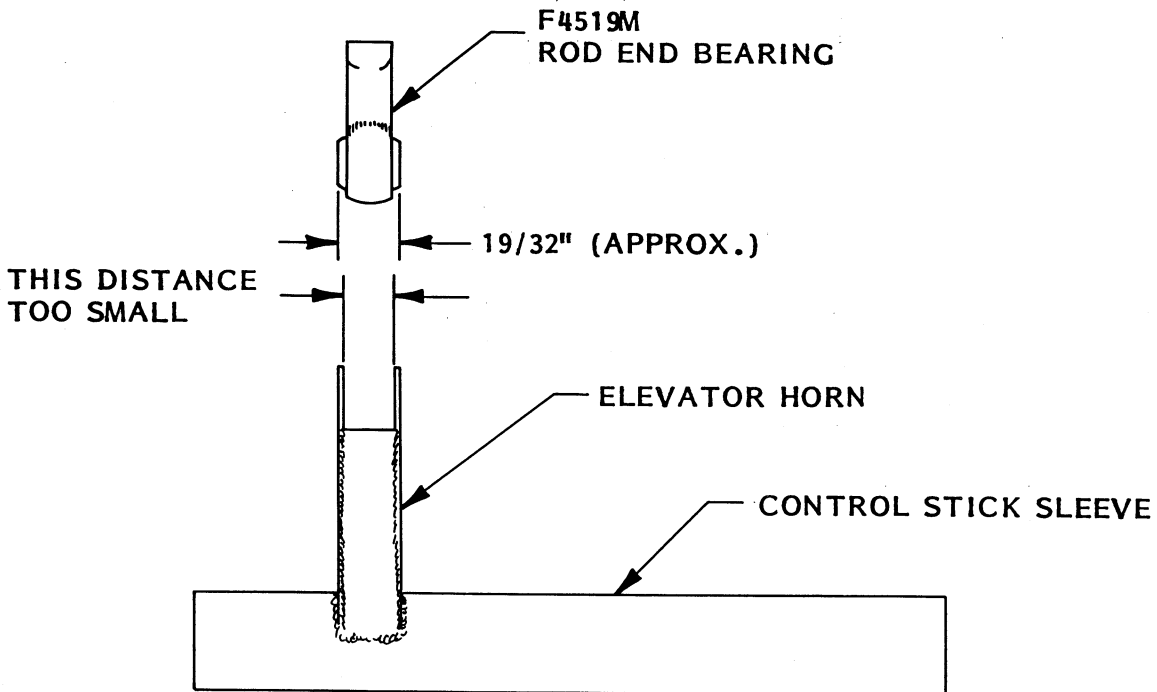


SERVICE BULLETIN 5

Subject 1: Control Stick Sleeve/Elevator Horn

Application: Subject 1 applies to all Glasair kits with prefabricated metal hardware.



Description: Some of the control stick sleeves were fabricated with the elevator horn arms too close together for installation of the F4519M rod end bearing.

If an F4519M rod end bearing will not fit between the arms of the elevator horn on the control stick sleeve included with your kit, return the control stick sleeve to us and we will supply a properly sized replacement.

STODDARD-HAMILTON
AIRCRAFT, INCORPORATED


MODEL GLASAIR	ASSEMBLY NAME SERVICE BULLETIN 5	REVISION	DATE 6/28/85	VOLUME	PAGE 1
------------------	-------------------------------------	----------	-----------------	--------	-----------

Subject 2: Spinner Front Plate

Application: Subject 2 applies to the front plates supplied with spinner kits for standard, extended hub, non-aerobatic Hartzell constant speed propellers (#HC-F2YL-1F/F7663D-4) for use with Lycoming O-320 and IO-320 (150/160hp) engines.

Description: The spinner front plate for the standard 150/160 hp Hartzell propeller was manufactured incorrectly. The outside diameter is substantially larger than required. Therefore, the spinner will not fit correctly with this front plate.

If you have been shipped a spinner front plate for the above mentioned engine/propeller combination, please notify us and we will supply a new, correct front plate to you as soon as possible.

 STODDARD-HAMILTON AIRCRAFT, INCORPORATED			
MODEL	ASSEMBLY NAME	REVISION	DATE
GLASAIR	SERVICE BULLETIN 5		6/28/85
		VOLUME	PAGE
			2