

SERVICE BULLETIN 31

SUBJECT: ERRONEOUS FIREWALL RIB LOCATION

APPLICATION: All Glasair III kits.

REFERENCES: Pages D-82 and D-92 in the Fuselage Assembly section of the Glasair III Instruction Manuals.

DESCRIPTION: The 4.75" dimension for the firewall rib above the top of the nose gear wheelwell, shown in FIGURE (D-48) on page D-82, locates the firewall rib too low. Since the lower header tank panel is referenced to the firewall rib, the resulting 9-3/4" vertical header tank dimension shown in FIGURE (D-54) on page D-92, provides inadequate clearance for the rudder pedal assembly.

DISCUSSION: Glasair III builders who have not yet fabricated the firewall rib and header tank should disregard the original dimensions for locating the firewall rib given on pages D-82 and D-92 from their Instruction Manuals and locate the firewall rib using dimensions given in FIGURE (1) in this Service Bulletin. These builders will avoid conflict between the header tank and the rudder pedal assembly by locating the bottom of the firewall rib 5-5/8" above the top of the nose gear wheelwell box, as shown in FIGURE (1). Then, when the bottom of the header tank is referenced to the firewall rib, the vertical dimension of the header tank will be approximately 9", as shown in FIGURE (1).

Revised Instruction Manual pages will be included with the next Instruction Manual Revision published.


STODDARD-HAMILTON
AIRCRAFT, INCORPORATED

MODEL	ASSEMBLY NAME	REVISION	DATE	VOLUME	PAGE
GLASAIR	SERVICE BULLETIN 31		03/05/87		1 of 3

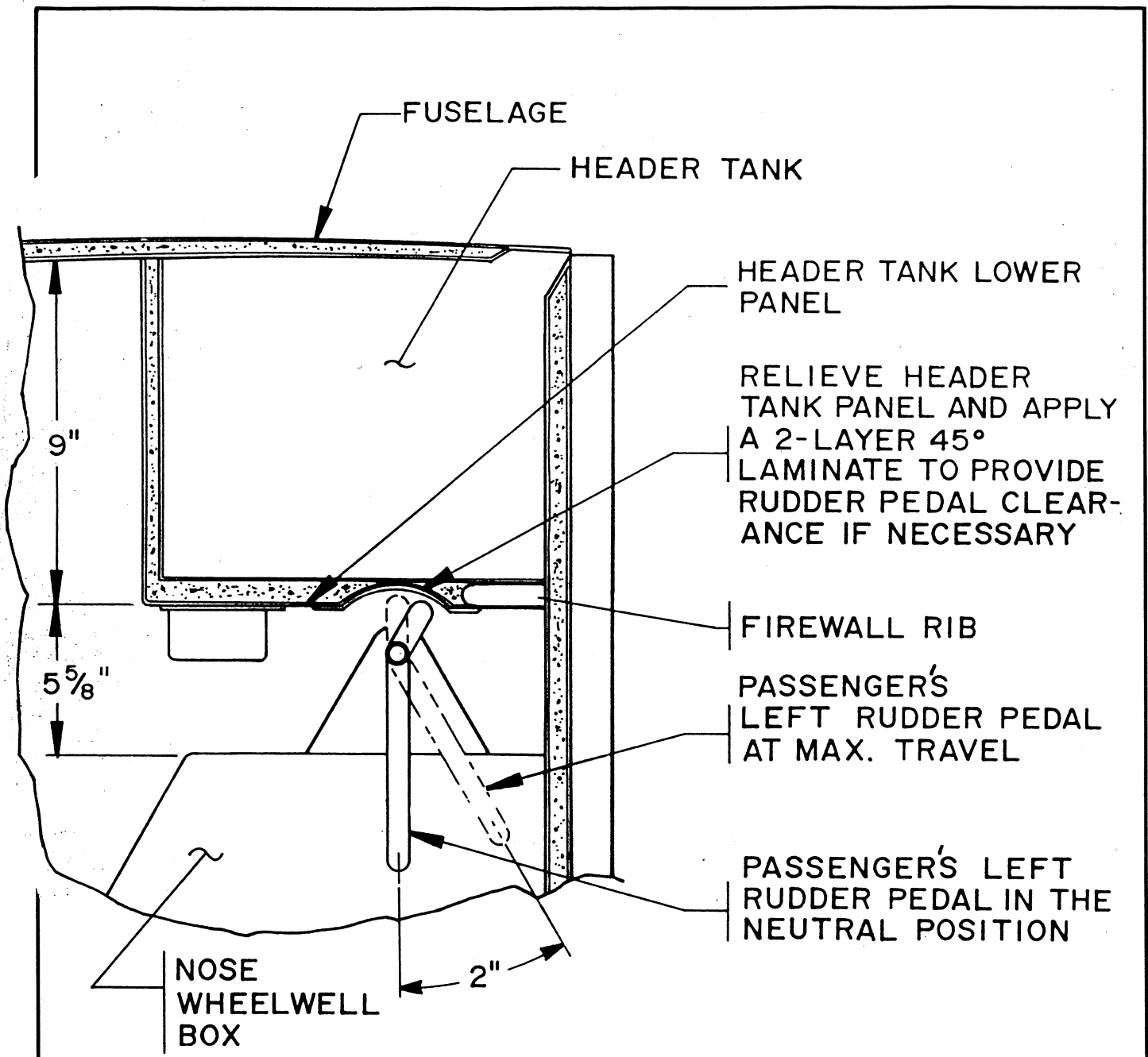


FIGURE (1)

Glasair III builders who have already constructed the header tank according to the dimensions provided in the original Instruction Manual must groove the underside of the lower header tank panel in the area of the rudder pedal assembly's crossover brace tube, as shown in FIGURE (1), to provide adequate clearance for proper rudder pedal travel.



MODEL GLASAIR	ASSEMBLY NAME SERVICE BULLETIN 31	REVISION	DATE 03/05/87	VOLUME	PAGE 2 of 3
------------------	--------------------------------------	----------	------------------	--------	----------------

NOTE: The crossover brace tube joins the two left rudder pedals together. Maximum travel of the left rudder pedals is 2" forward of the neutral position measured at the lower rudder pedal pivot tube, as shown in FIGURE (1). In the neutral position the rudder pedal post is vertically parallel to the aft face of the firewall.

Relieve the lower laminates and 1/2" foam core of the lower header tank panel to provide clearance for the rudder pedal crossover brace, as shown in FIGURE (1). Relieve all of the foam core in this area, exposing the upper laminates of the lower header tank panel. Be very careful, however, not to damage the upper laminates of the panel. When adequate rudder pedal clearance has been achieved, apply a two layer 45° bidirectional laminate over the relieved area, as shown in FIGURE (1), extending the laminate for 1" onto surrounding structure.

NOTE: The laminates will be easier to apply with the rudder pedal assembly removed temporarily. To install and remove the rudder pedal assembly, slide the right rudder pedal weldment into the left pedal weldment until the center support bracket can slip past the fuel sump and nose gear box.



MODEL	ASSEMBLY NAME	REVISION	DATE	VOLUME	PAGE
GLASAIR	SERVICE BULLETIN 31		03/05/87		3 of 3