

SERVICE BULLETIN 46

SUBJECT: MISLOCATION OF NOSE WHEEL AXLE ROLL PIN HOLES

APPLICATION: NOSE GEAR AXLES SHIPPED WITH GLASAIR II RG, GLASAIR II FT, AND GLASAIR III KITS PRIOR TO 11/12/87.

NOTE: This service bulletin applies only to axles with welded end caps.

DESCRIPTION: To prevent the nose gear axle on tricycle gear Glasair aircraft from rotating, the axle has two 1/2" x 3/16" Dia. roll pins installed in predrilled holes in one end. The roll pins fit into machined recesses in the nose wheel axle hub, as shown in FIGURE (1). The roll pins must fit entirely within the axle hub when the axle is inserted into the hub, allowing the wheel bearings to rest flush against the inside face of the axle hub.

The lengthwise location of the roll pin holes in the axle is incorrect in some of the axles shipped. The incorrect location of the holes either prevents the axle from bottoming in the hub or allows the roll pins to protrude beyond the inboard face of the axle hub when the axle is completely inserted into the hub. Either of these situations impose improper loads on the roll pins, and the resulting wear causes looseness or play in the nose wheel bearings.

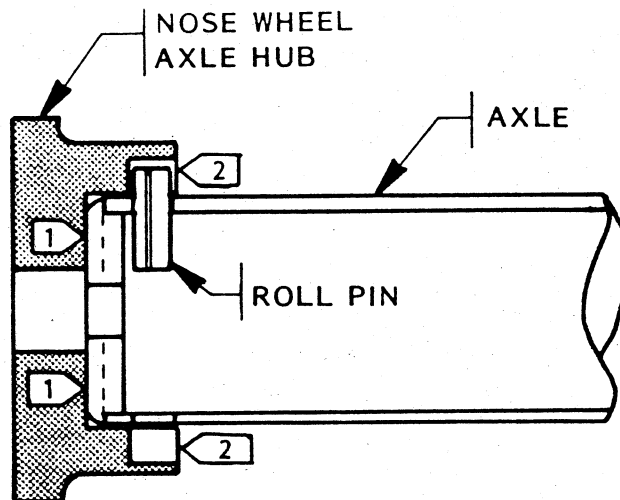


FIGURE (1)

STODDARD-HAMILTON
AIRCRAFT, INCORPORATED

MODEL GLASAIR	ASSEMBLY NAME SERVICE BULLETIN 46	REVISION	DATE 12/28/87	VOLUME	PAGE 1 OF 2
------------------	--------------------------------------	----------	------------------	--------	----------------

SOLUTION: Install the 3/16" Dia. x 1/2" roll pins in the holes in the nose wheel axle and insert the axle completely into one of the nose wheel axle hubs, as shown in FIGURE (1). Verify that:

1. The axle bottoms in the nose wheel axle hub, as referenced by Flag #1, FIGURE (1).
2. The roll pins do not protrude beyond the inboard face of the axle hub, as referenced by Flag #2, FIGURE (1).

If these two conditions are met, the locations of the roll pin holes in the axle are correct and the nose wheel assembly can be completed as described in the Instruction Manual.

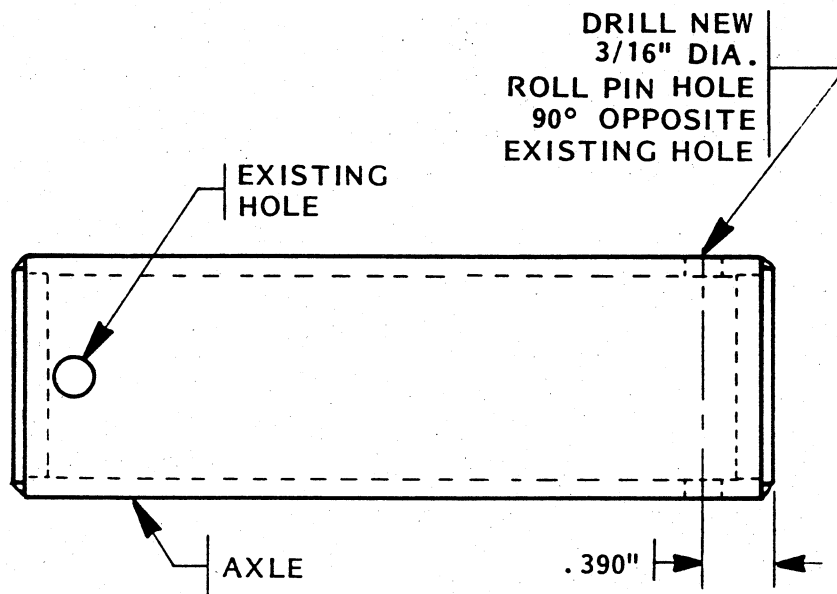


FIGURE (2)

If conditions 1 and 2 cannot be met and the roll pins either extend past the inboard face of the axle hub or prevent the axle from bottoming solidly in the hub, relocate and redrill the roll pin holes in the opposite end of the axle, using the dimensions provided in FIGURE (2).

NOTE: When completing the nose wheel assembly, install the nose wheel bearing adjusting shims into the axle hub on the end of the axle opposite the roll pins.

STODDARD-HAMILTON
AIRCRAFT, INCORPORATED

MODEL GLASAIR	ASSEMBLY NAME SERVICE BULLETIN 46	REVISION	DATE 12/28/87	VOLUME	PAGE 2 OF 2
------------------	--------------------------------------	----------	------------------	--------	----------------