

SERVICE BULLETIN 51

SUBJECT: POSSIBLE NOSE GEAR DRAG BRACE BINDING

APPLICATION: Glasair III welded nose gear drag brace (363-5419-001).

DESCRIPTION: During the fabrication of the first production run (50 assemblies) of the Glasair III nose gear drag brace, an unknown number of the drag braces were not jugged properly, resulting in the aft end of one (or both) drag brace tube(s) being an incorrect distance from the part centerline. This improper jugging of the drag brace could cause a binding or interference problem when retracting the nose gear.

SOLUTION: To determine whether your nose gear drag brace was jugged improperly, mark two perpendicular lines on a flat surface and insert a 7/16" rod through the drag link attach holes, as shown in FIGURE (1).

NOTE: If a rod smaller than 7/16" is used, the rod should be firmly held in place against the forward end of the drag link attach holes to ensure accuracy.

Center one of the perpendicular lines between the two drag link attach flanges, as shown, and align the forward edge of the 7/16" rod with the remaining line. Measure the distance between the center line (line running between the drag link attach flanges) and the drag brace aft attach tabs for both sides. The correct distance between the center line and the drag brace aft attach tab is 3.52" + or - 0.10".



MODEL GLASAIR	ASSEMBLY NAME SERVICE BULLETIN 51	REVISION	DATE 04/15/88	VOLUME	PAGE 1 of 2
------------------	--------------------------------------	----------	------------------	--------	----------------

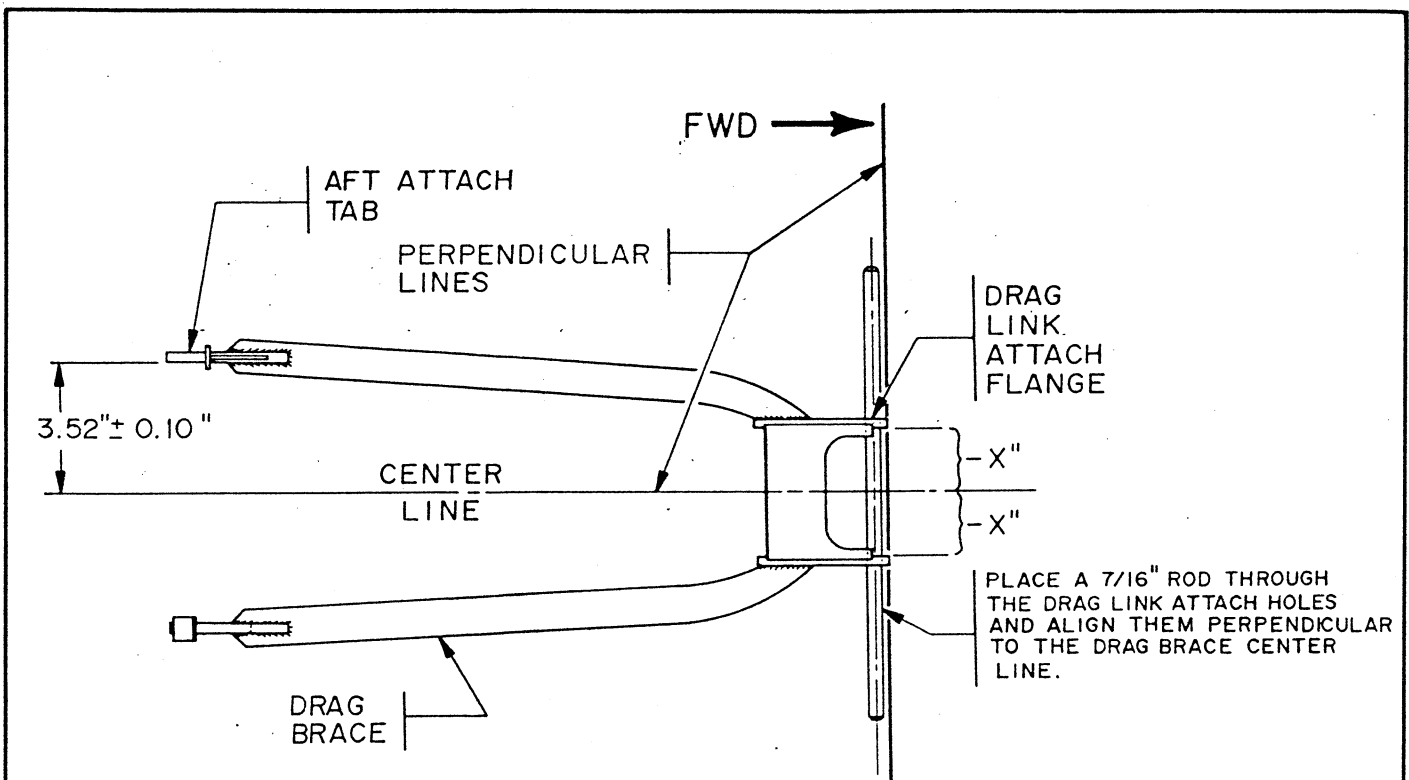


FIGURE (1)

If the drag brace supplied with your kit does not meet the dimensional requirements listed above, we request that the drag brace be returned to Stoddard-Hamilton Aircraft's shipping department by May 30, 1988. It is very important that Stoddard-Hamilton receive the dimensionally incorrect drag brace by this date, since we wish to adjust all incorrect drag brace assemblies at one time. Any parts returned after this deadline will not be corrected until the next production run of drag braces is fabricated (estimated time: 9 months).

Because of the time required to strip, modify, replate, and repaint the original part, please allow 5-6 weeks to complete the rework.


STODDARD-HAMILTON
 AIRCRAFT, INCORPORATED

MODEL GLASAIR	ASSEMBLY NAME SERVICE BULLETIN 51	REVISION	DATE 04/15/88	VOLUME	PAGE 2 of 2
------------------	--------------------------------------	----------	------------------	--------	----------------