

SERVICE BULLETIN 87, Revision A

SUBJECT: SEAT BELT ATTACH ANGLE FABRICATION

APPLICATION: All Glasair II, Glasair II-S, and Glasair III aircraft.

INSTRUCTION MANUAL REFERENCES:

- Glasair III; pages C-253 and following.
- Glasair II RG and II-S RG; pages C-227 and following.
- Glasair II FT and II-S FT; pages C-190 and following.
- Glasair II TD and II-S TD; pages C-148 and following.

DESCRIPTION: The seat belt attach angle fabrication instructions specify a 3/8" diameter hole drilled in the 1" leg of the angle and a bushing pressed into the hole for the seat belt securing bolt. Instead, we recommend drilling a 1/4" diameter hole in the 1-1/4" leg of the angle for the seat belt securing bolt and assembling the seat belt securing hardware differently, as described below.

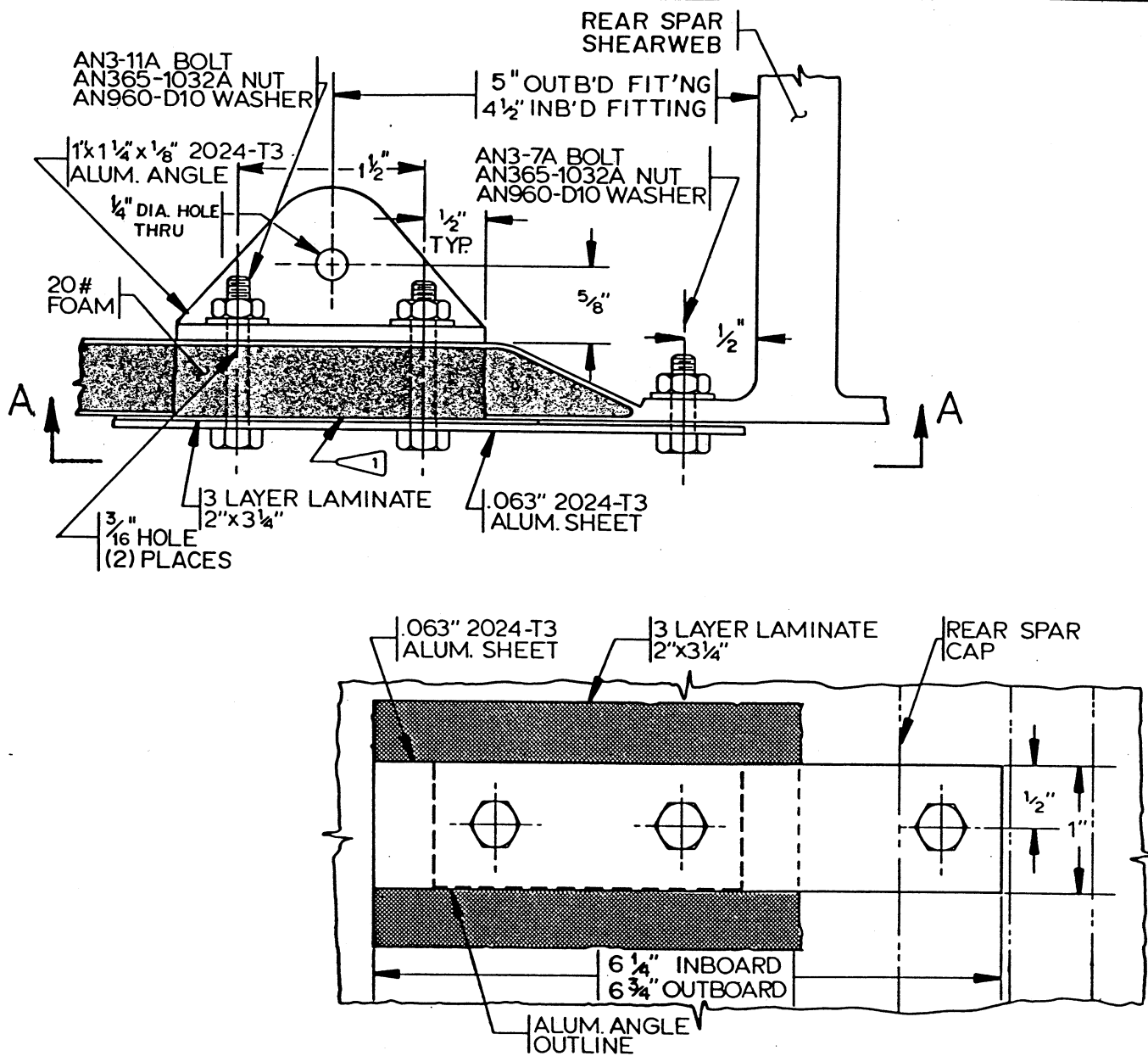
NOTE: Service Bulletin 87 was previously a mandatory service bulletin. After further analysis of the seat belt attach bracket, however, we have determined that its strength, as originally shown in the Instruction Manuals, is adequate. Revision A, therefore, changes Service Bulletin 87 from mandatory to advisory status.

SOLUTION: Drill two 3/16" bolt holes through the 1" leg of the seat belt attach angle for mounting the angle to the wing, and drill a 1/4" hole through the 1-1/4" leg for securing the seat belt assembly. This results in a greater edge distance to the seat belt securing bolt to provide additional strength. Fabricate the seat belt attach angles and mount them to the wing, as shown in FIGURE (1) of this Service Bulletin. Secure the seat belt assemblies to the attach angles using the hardware shown in FIGURE (1).

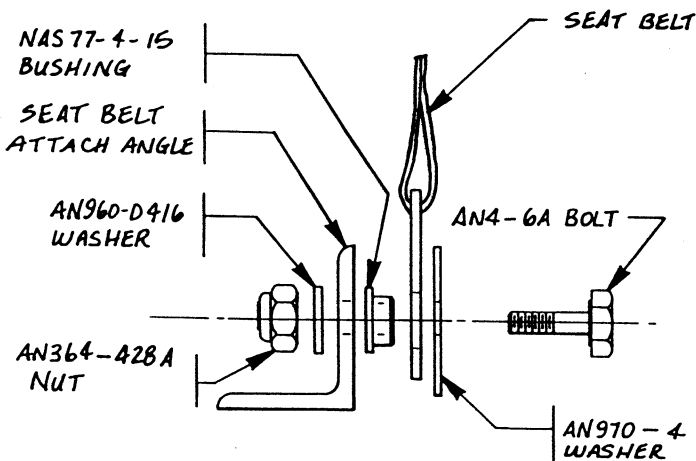
The material to fabricate the seat belt attach angles is supplied in the kit. If you have already fabricated the seat belt attach angles, and decide to fabricate new ones, you will need four 2-1/2" lengths of 1" x 1-1/4" x 1/8" 2024-T3 aluminum angle (Stoddard-Hamilton Stock Number 100-0280-001; \$0.85 per inch).



MODEL GLASAIR	ASSEMBLY NAME SERVICE BULLETIN 87	REVISION A	DATE 6/22/90	VOLUME	PAGE 1 of 2
------------------	--------------------------------------	---------------	-----------------	--------	----------------



VIEW A-A



SEAT BELT ATTACH DETAIL

FIGURE (1)

STODDARD-HAMILTON
AIRCRAFT, INCORPORATED

MODEL GLASAIR	ASSEMBLY NAME SERVICE BULLETIN 87	REVISION A	DATE 6/22/90	VOLUME	PAGE 2 of 2
------------------	--------------------------------------	---------------	-----------------	--------	----------------