

SUBJECT: Fuel Selector Valve, Inadvertent Shut-Off

APPLICATION: All Glasair aircraft

DESCRIPTION: To prevent possible inadvertent selection of the OFF position or other unintentional misuse of the fuel selector valve, it is very important that each pilot who flies the airplane is adequately checked out and fully understands the operation of the valve.

The fuel selector valve in the Glasair has two OFF positions, as well as positions to select the header tank and the main tank. For Glasair II, II-S, and III aircraft, if the selector valve is installed as described in the Instruction Manuals, the valve selects the main tank when the pointer is oriented to the left, the header tank when the pointer is forward, and shuts off the fuel to the engine when the pointer is in either of the other two positions. For the Glasair I, the Instruction Manuals did not specify any particular selector valve position.

NOTE: Confusion can occur if a pilot who is not familiar with the airplane uses the handle as the pointer. The fuel selector valve supplied with Glasair kits has a small pointer opposite the handle, as shown in FIGURE (1), which should be used to indicate the selected fuel tank.

CAUTION: The fuel selector handle must be located against one of its stops and pointing to the appropriate fuel tank for proper operation. If the handle was inadvertently positioned between the main tank and the header tank, the engine would continue to run normally (The valve will feed off both tanks) until one of the tanks runs dry. At that time a loss of power could occur due to the intrusion of air into the fuel line from the empty tank, most likely the header tank. Because of the lag in time from when the handle is positioned and when the loss of power occurs, the pilot may not be immediately aware of the cause to his problem.



MODEL GLASAIR	ASSEMBLY NAME SERVICE BULLETIN 115	REVISION A	DATE 11/18/93	VOLUME	PAGE 1 of 3
------------------	---------------------------------------	---------------	------------------	--------	----------------

SOLUTION:

**WARNING:**

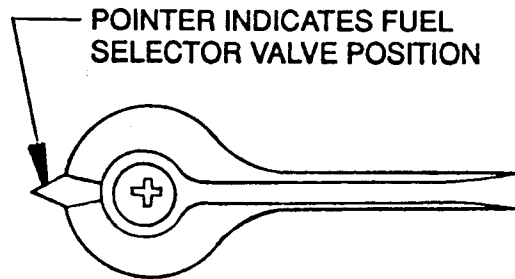


FIGURE (1)

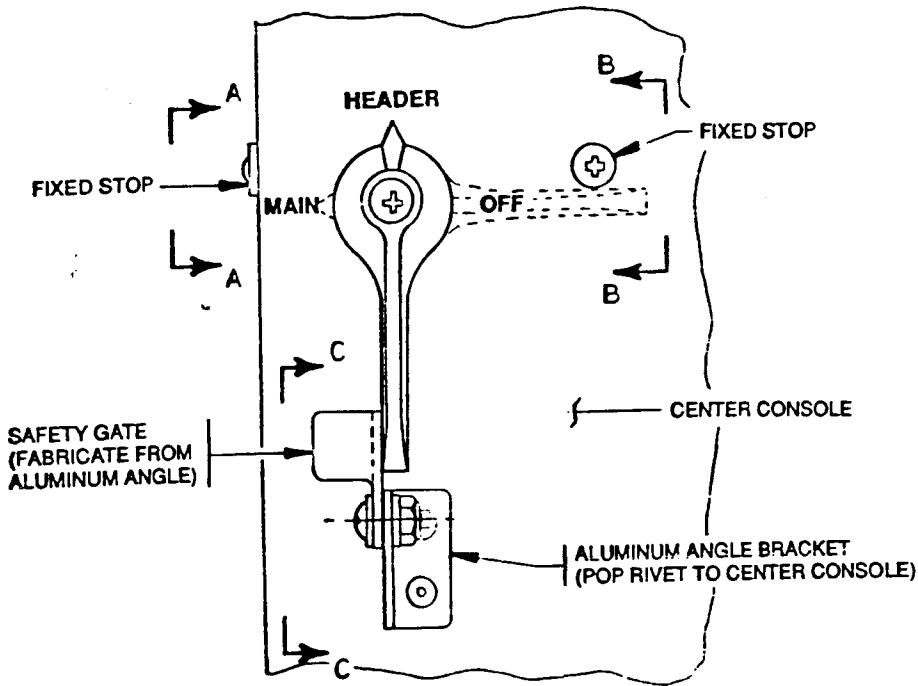
1. Fabricate and install three stops to prevent the fuel selector valve handle from being inadvertently turned to the (aft) OFF position. Make the aft stop a safety gate that must be deliberately moved out of the way to select the normal OFF position. Suggestions for these components are shown in FIGURE (2). The stops will give more positive and accurate fuel valve handle positions.
2. Install a placard in the aircraft to show which end of the fuel selector valve handle indicates the chosen fuel tank. A suggested placard is shown in FIGURE (1).
3. Finally, common sense dictates that the selector valve handle positions be clearly and correctly marked.

**WARNING: Installing the fuel selector valve placard and the handle stops is MANDATORY.**

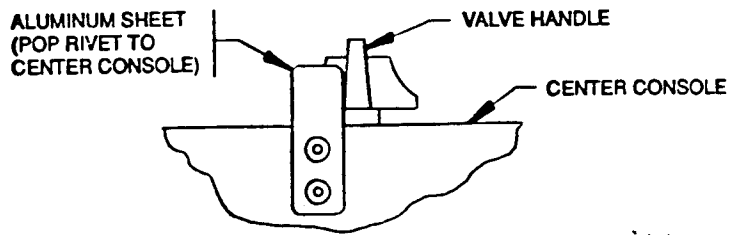
**NOTE:** Also provide adequate clearance between the valve handle and the center console surface. Upholstery that is too thick, for example, can lift up on the handle, causing internal valve leakage.

***H***  
**STODDARD-HAMILTON**  
AIRCRAFT, INCORPORATED

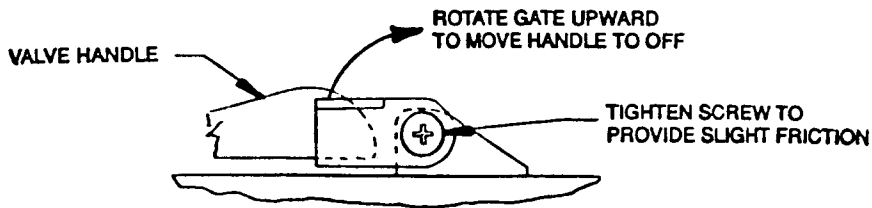
MODEL	ASSEMBLY NAME	REVISION	DATE	VOLUME	PAGE
GLASAIR	SERVICE BULLETIN 115	A	11/18/93		2 of 3



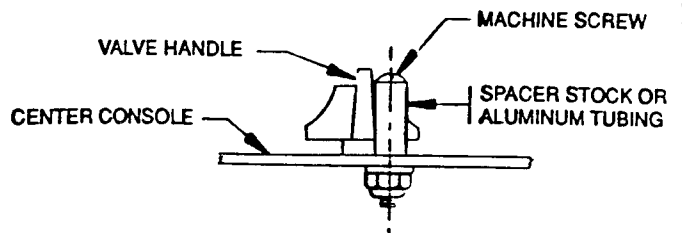
**PLAN VIEW**



**VIEW A-A**



**VIEW C-C**



**VIEW B-B**

**FIGURE (2)**

  
**STODDARD-HAMILTON**  
 AIRCRAFT, INCORPORATED

MODEL GLASAIR	ASSEMBLY NAME SERVICE BULLETIN 115	REVISION A	DATE 11/18/93	VOLUME	PAGE 3 of 3
------------------	---------------------------------------	---------------	------------------	--------	----------------