

**2022**



**GLASAIR  
SPORTSMAN      PRODUCT CATALOG**

# PRODUCT CATALOG

## New Product Accessories



Glasair has recently collaborated with Powerflow for a new Design. We are proud to announce to be selling this beautiful exhaust moving forward. This is our 'Test' Mule. While the plane looks great, Powerflow has helped to lower noise and increase horsepower.

EXHAUST, POWERFLOW ID-390-A3B6  
EXHAUST, POWERFLOW C-360

504-05400-01 \$ 4,540.00  
504-05500-02 \$ 4,045.00

**NOTE:** The addition of the Powerflow Exhaust requires modification of the current cowling exit area similar to the enhanced exit area below. Prices for the exhaust may vary based on lead times.



Answering popular customer feedback, our engineering team finally created a permanent fix to help with oil temperature and cylinder cooling issues you may be having with your 360 or 390. This cowling enhancer helps to dramatically increase air flow output while still looking aesthetically pleasing and limiting cooling drag to maintain cruise performance. The enhancer, combined with our new oil cooler shroud results in temperatures returning to a normal operating range.

CLEAR COSMETIC - LOWER COWL COOLING ENHANCER  
PRIMERED - LOWER COWL COOLING ENHANCER  
PRIMARY OIL COOLER SHROUD KIT  
DISCOUNT BUNDLE DEAL

039-09020-01C \$ 2,100.00  
039-09020-01 \$ 1,100.00  
039-09010-01 \$ 650.00  
SAVINGS -\$ 200

## PRODUCT CATALOG



We worked with our vendor to update the mold and move the camera window 3" higher. This helped to alleviate the restricted movement when opening or closing the door.

CAMERA WINDOW -LARGE (3" HIGHER)

930-07100-001 / 002      \$ 745.00



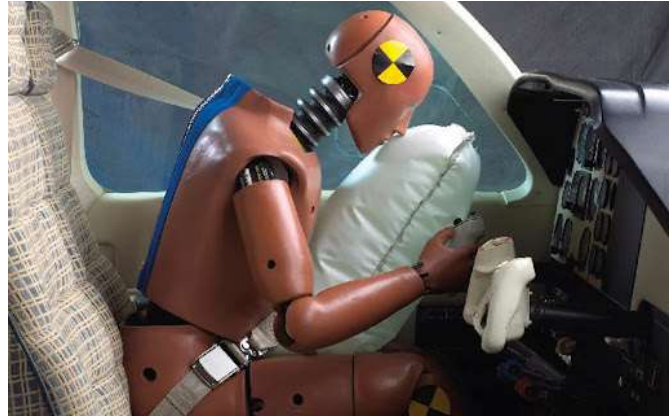
Aviation covers Inc. has made a custom fit protective cover for your aircraft. Used for exterior use, this easy to install cover helps to prevent rain and moisture from leaching into your aircraft. Contains a 4 quick disconnect buckles on the fuselage and 2 tennis ball loops around the wings. Velcro along the pilot side door allows for ease of access. Covers include embroidered N-number on request.

AVIATION AIRPLANE COVER

900-01000-01      \$ 525.00



## PRODUCT CATALOG



AmSafe Brings Airbag Seat Belts to the GA market to allow for retrofit installation on older aircraft. The FAA granted AmSafe's State of the Art Restraint System (SOARS) supplemental type certificate approval July 12 with an approved model list of 541 models and our experimental aircraft.

AmSafe's Seatbelt Airbag System (SOARS) is a universally adjustable lapbelt airbag restraint system designed to mitigate head and torso injury in aircraft crash conditions.

Kit includes Glasair's installation kit. For both Pilot and CoPilot

AM-SAFE AIRBAG SEATBELT

105-25100-101

\$ 3,650.00



Don't fly blind! Give yourself and your passengers that extra margin of safety. These are transparent sun visors which rotate and extend to offer complete cockpit protection from the sun. The oversize, tinted lens filters out 95% of the ultraviolet rays, reduces glare by 94% and heat by 86%. Distortion free. Fully STC'd and PMA'd. The system, which includes pilot and co-pilot visors, installs in minutes.

930-03500-01

\$ 550.00

PRODUCT CATALOG



Sunbeam landing/taxi/recognition light that features two intense Light Emitting Diodes (LEDs). Featuring a 50,000 hour life, the Sunbeams are produced in a rectangular format to fit in our existing landing light brackets.



A leader in LED technology, AeroLEDs has created a reliable light source that requires only 25 watts of power to produce over 100 watts or 91,000 candela which amounts to 3,300 lumens. Featuring wig-wag capability, the AeroLEDs on any aircraft can be seen in hazy daylight long before people can make out the airframe and because of their long life they can be active at all times. Individual lights have a built in pulsing capability that is nearly as effective as the wig-wagging. The AeroSun™ is protected against overheating with a built in protection circuit, is protected from lightning transients and ESD, voltage spikes, reverse voltage, and undervoltage conditions. These lights produce little to no noise in the electrical system compared to our older HID lights.

LED LANDING LIGHT KIT (RETRO KIT)	921-04100-07	\$ 1,145.00
LED LANDING LIGHT KIT (FRESH INSTALL)	921-04100-06	\$ 1,299.00



The Hickman Headset Hanger with our new logo. These hangers are easy to install with a simple strap and self locking features and are easily retrofitted into any Glastar or Sportsman.

201-00705-01	\$ 79.00
--------------	----------

# PRODUCT CATALOG

## New Seat Design



2020 Refresh seats are now available to order! There is a 3 month lead time and they come standard with a 12v air lumbar. Each door panel and bulkhead A will come with embroidered experimental. The new Sportsman logo on the seat

back and bulkhead A.  
FWD UPHOLSTERY SET, 2020R

874-00000-001

minimum 3 month lead time upon purchase.

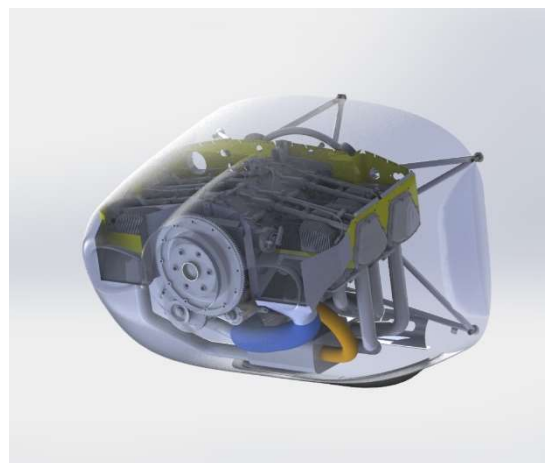
\$ 4995.00

## IO-390 Baffling

Coming soon, a new FWF Baffling Kit with a automatic alternate air door and instrument panel pilot alert. The new FWF design will increase cooling flow to your engine while reducing cooling drag and eliminate the wasted area in the previous design.

Kits will be purchased for various models of the 390 series Lycoming engines as retrofit options or new kit builders.

**NOTE:** This kit will be standard with new Sportsman kit purchases once full development is finished, tested and in stock.



# PRODUCT CATALOG

## Engines

---

### Terms of Engine Purchases:

Prices are valid for orders received prior to October 1, 2022 covering engines scheduled for shipment from Lycoming's factory during the 2022 calendar year. Engines are shipped to U.S. customers directly from the manufacturer - Textron Lycoming. International customers have the option of requesting shipment via Glasair Aviation USA, LLC so that engine orders can be shipped along with kit shipments. Lead times are typically 14 to 20 weeks. Please plan your order accordingly.

35% is required to be paid upfront at the time of order for all engine purchases, and a cancellation fee of 35%

Our Lycoming engine configurations can include: Ring gear, slick magnetos or Pmags; spark plugs and ignition harness; All engines are configured for installation on the Sportsman and GlaStar airframe.

Upon inquiry please respond with desired configuration.

Please see manufacturer details for warranty.



# PRODUCT CATALOG

## Experimental Engines

ENGINE, Y10-360-M1A DUAL SLICKS	501-04360-01	\$41,750
ENGINE, Y10-360-M1A DUAL EMAGS	501-04360-02	\$44,250
ENGINE, Y10-360-M1A DUAL EIS	501-04360-03	\$44,250
ENGINE, Y10-390-A3B6 DUAL SLICKS	501-04390-01	\$50,150
ENGINE, Y10-390-A3B6 DUAL EMAGS	501-04390-02	\$52,650
ENGINE, Y10-390-A3B6 DUAL EIS	501-04390-03	\$52,650
ENGINE, Y10-390-C3B6 DUAL SLICKS	501-04390-04	\$53,400
ENGINE, Y10-390-C3B6 DUAL EMAGS	501-04390-05	\$55,900
ENGINE, Y10-390-C3B6 DUAL EIS	501-04390-06	\$55,900

MOGAS pistons are roughly a \$4,000 increase for Y10-390's

## Exp Thunderbolt Engines – Typically a \$4,000 increase from base model price

ENGINE LYC Y10-360-M1B THUNDERBOLT	221-0360-110X	Call for quote
ENGINE, LYC Y10-390-A3B6 THUNDERBOLT	501-04000-14	Call for quote
ENGINE, LYC Y10-390-EXP119 THUNDERBOLT	501-04000-16	Call for quote

Thunderbolt engines include

- Balanced Rotating System within .5 grams (Connecting rods, Pistons, Piston Rings)
- Ported and Polished Cylinders
- Chrome Rocker Box Covers
- Airflow Performance Injection
- Avstar Fuel Injection

Many options such as

- Cold Air Induction
- Polished Cylinder Fins
- Single, Double or Custom Engine Color

## Certified Engines

ENGINE, LYC O-320-D1F WITH MAGNETO IGNITION 160HP	221-0320-102	Call for quote
ENGINE, LYC O-320-D1F WITH ELECTRONIC IGNITION 160HP	221-0320-104	Call for quote
ENGINE, LYC O-320-E1F WITH MAGNETO IGNITION 150HP	221-0320-103	Call for quote
ENGINE, LYC O-360-A1A	501-04000-01	Call for quote
ENGINE, LYC O-360-A1F6	501-04000-02	Call for quote
ENGINE, LYC O-360-A4M	501-04000-03	Call for quote
ENGINE, LYC IO-360-M1A	221-0360-105	Call for quote
ENGINE, LYC IO-390-A3B6,	501-04000-08	Call for quote

O-320-D1F - Engine uses high-compression pistons and requires 100LL aviation fuel. The -D1F engine can be used with either a fixed pitch or Hartzell constant speed prop with no RPM range restrictions as noted above.

O-320-E1F engine uses low-compression pistons and can use auto fuel or 80/87 aviation fuel. Like the D1F, the E1F is available with either a conventional magneto ignition system or Pmags

## Mags

PMAG KIT	501-04010-03	\$ 2,250.00
----------	--------------	-------------

Everything needed to install one additional Pmag on your engine. Mag gear, spark plug adapters, Auto 4 lead kit, etc.



# PRODUCT CATALOG

## Terms of Prop Purchases:

Prices are valid for orders received prior to October 1, 2022 covering Props scheduled for shipment during the 2022 calendar year. Props are shipped to U.S. customers directly from the manufacturer. International customers have the option of requesting shipment via Glasair Aviation USA, LLC so that engine orders can be shipped along with kit shipments. Lead times are typically 10 to 18 weeks. Varies greatly depending on manufacturer. Please plan your order accordingly.

25% is required to be paid upfront at the time of order for all propeller purchases, and a cancellation fee of 25% All props do not come with a governor or spinner unless specified

## Hartzell props

PROP, HARTZELL 80" CONSTANT SP	502-04000-03	\$11,750.00	C2R00081 (1984) HC-C2YR-1BF/F8477-4/SM19
PROP, CMP 68", IO360, HRTZL	681-0476-007	\$13,500.00	C2R00014 (1358) HC-C2YR-1BF/F7068-2/SM8
PROP, HRTZL 74", BLENDED AIRFOIL	681-0476-008	\$11,500.00	C2R10707 (2737) HC-C2YR-1BFP/F7497/SM8
PROP, HRTZL 72", BLENDED AIRFOIL	681-0476-009	\$11,500.00	C2R10752 (2737) HC-C2YR-1BFP/F7497-2/SM8
PROP, HRTZL 74", FOR IO-390 BLENDED	681-0476-010	\$11,500.00	C2R10701 (2631) HC-C2YR-1BFP/F7497/SM19
PROP, 74" 3 BLADE FOR DIESEL	681-0476-014	\$22,000.00	3AT00005 (3291) 3A1-TP724-A1/75A01-2
PROP, 76" TRAILBLAZER	681-0476-017	\$18,000.00	C2R40577X HC-C2YR-1NX/NG8301-7X1/SM19
PROP, 80" TRAILBLAZER	681-0476-013	\$18,000.00	C2R40503X (3183) HC-C2YR-1NX/NG8301-3X1/SM19
PROP, 83" TRAILBLAZER	681-0476-015	\$18,000.00	C2R34000X HC-C2YR-1NX/NG8301X1/SM19
PROP, HARTZELL 74" EXPLORER 3 BLADE	681-0476-016	\$24,000.00	3C1-R430A1X/76C03-2X2/SM47
PROP, 80" PATHFINDER	681-0476-018	\$24,500.00	3C1-R430A1X/80C01X/SM47

## Trailblazer Lineup

Hartzell Trailblazer swept-tip propellers are designed to maximize performance of the numerous aircraft, both certified and amateur built, specifically designed for bush and backcountry flying. The two-blade version is compatible with most Lycoming 360 and 390 series engines, with no placards or restrictions. The two-blade configuration of the Hartzell Trailblazer propeller is available in 76", 80" and 83" diameters. The Hartzell Trailblazer's all carbon fiber construction features an innovative mesh erosion shield and field replaceable nickel-cobalt leading edge ensuring it can withstand demanding backcountry and bush flying. The carbon fiber structural composite construction is more than five to 10 times stronger than beech wood and spruce, respectively, and includes Hartzell's state-of-art wedge shank blade retention design.



## Blended Airfoil



The goals of the blended airfoil design are to produce mission-optimized propellers able to incorporate absolute maximum flight performance, reduced noise profiles, and greater blade-to-blade accuracy.

This design allows Hartzell to incorporate different airfoils along progressive sections of a blade. Doing this maximizes the blade mid-section for developing low-speed thrust, while the tip sections are optimized to reduce noise levels.

# PRODUCT CATALOG

Propeller	Tailwheel	Tailwheel +Ext. Gear	Tricycle	Floats	Take-Off	Climb	Cruise	Weight	Blade Material
2-Blade 74" Blended Airfoil	✓	○	✓	✓	5	5	2	58.5	Aluminum
2-Blade 76" Trailblazer	✓	○	✓	✓	3	3	3	41.1	Carbon Fiber
2-Blade 80" Trailblazer	✓	✓	○	✓	2	2	4	41.3	Carbon Fiber
2-Blade 83" Trailblazer	○	✓	✗	✓	1	1	5	41.5	Carbon Fiber
3-Blade 74" Raptor	✓	○	✓	○	4	4	1	42	Carbon Fiber

The MT Constant Speed 72" 3-Blade Reversing Propeller is also available for float operations.

Recommended Combination	✓	Take Off Criteria: Predicted take-off thrust, lbs. at 20 KTAS
Satisfactory	○	Climb Criteria: Predicted climb thrust, lbs. at 3,000 ft. PALT
Not Approved	✗	Cruise Criteria: Predicted cruise thrust, lbs. at 6,000 ft. PALT

## Sensenich Propellers

PROP, SENS CRUISE, O-360, GS	502-06000-01	76EM8S16-O-65	Call for quote
PROP SENSENICH FP 7/16" BOLTS	681-7077-101	70CM7S16-O-77	Call for quote
PROP SENSENICH FP 3/8" BOLTS	681-7077-102	70CM6S16-O-77	Call for quote
PROP, SENS CL, O-320 7/16, GS	681-7462-101	74DM7S16-O-62	Call for quote
PROP, SENS CR, O-320 7/16, GS	681-7465-101	74DM7S16-O-65	Call for quote

76EM8S16-O-65 - 76" diameter, 65" pitch. Designed for optimum cruise speed. Operated on the O-360 A4M, the prop has no RPM restrictions; on the O-360-A1A or A1F6, the prop is restricted from continuous operation between 2150 and 2350 RPM.

74DM7S16-O-62 - Climb Propeller for Lycoming O-320 with 7/16" Prop Bolts: 74" diameter, 62" pitch. Designed for optimum climb performance.

74DM7S16-O-65 - Cruise Propeller for Lycoming O-320 with 7/16" Prop Bolts: 74" diameter, 65" pitch. Designed for optimum cruise speed.

## MT Propellers

PROP, 80" 2 BLADE HYDRAULIC	502-05000-05	MTV-15-B/203-58	Call for quote
PROP, 80" 2 BLADE HYRAULIC	502-05100-05	MTV-15-B/203-58	Call for quote
PROP, 71" 3 BLADE HYDRAULIC	502-05400-01	MTV-12-B/183-59B	Call for quote
PROP 72" 3 BLADE HYRD, REVERSE	502-05400-02	MTV-12-B-C-R(M)/CFR183-59B	Call for quote
PROP, 78" 3 BLADE HYDR, REVERSE	502-05400-03	MTV-9-B-C-R(M)/CR200-52	Call for quote
PROP, 78" 3 BLADE, HYDR, NON REVERSE	502-05400-04	MTV-9-B/200-52	Call for quote
PROP, 71" 3 BLADE HYDRAULIC	502-06500-01	MTV-12-C/180-17F	Call for quote

# PRODUCT CATALOG

All MT props come with an MT spinner



## Propeller Accessories

GOVERNOR 160,180,210HP - JIHOSTROJ	681-0210-050	P-920-050/A (UNIVERSAL) (2 lbs)	\$ 1,750.00
GOVERNOR 210 HP - Hartzell	681-0210-051	S-1-22 (2.93 lbs)	\$ 2,600.00
SPINNER INSTL, CS COMP, GS/SP	301-0260-508	Fiberglass Spinner Kit for CS compact hub propellers on GS/SP	\$ 675.00
SPINNER INSTL, CS COMP, GS/SP	301-0260-508C	Carbon Spinner Kit for CS compact hub propellers on GS/SP	\$ 700.00
SPINNER INSTL, Raptor, GS/SP	301-0260-510	Carbon Spinner kit for Raptor hub propellers on GS/SP	\$ 899.00
SPINNER INSTL, CS EXT, I/II/GS	301-0260-501	Lycoming with Hartzell Constant-Speed Propeller Extended Hub	\$ 600.00
SPINNER INSTL, FP 3/8, GS	301-0260-506	Lycoming with Sensenich Fixed-Pitch Propeller and 3/8" Prop Bolts	\$ 600.00
SPINNER INSTL, FP 7/16, GS	301-0260-507	Lycoming with Sensenich Fixed-Pitch Propeller and 7/16" Prop Bolts	\$ 600.00

PRODUCT CATALOG

Avionics Packages

VFR Garmin Standard Panel	042-04010-00	Estimated price	\$40,000
VFR Pro Garmin panel	042-04010-01	Estimated price	\$49,000
IFR Lite Garmin Panel	042-04010-02	Estimated price	\$50,000
IFR Standard Garmin Panel	042-04010-03	Estimated price	\$61,000
IFR Pro Garmin Panel	042-04010-04	Estimated price	\$67,000
DYNON HDX VFR PREMIUM PANEL	042-04010-05	Estimated price	\$46,388
DYNON HDX IFR LITE PANEL	042-04010-06		\$48,789
DYNON HDX IFR PRO PANEL	042-04010-07		\$59,814
AFS VFR PREMIUM PANEL, AF-5600	042-04010-08	Estimated price	\$46,388
AFS IFR LITE PANEL, AF-5600	042-04010-09		\$48,789
AFS IFR PRO PANEL, AF-5600	042-04010-10		\$59,814

Instrument Panels



FIBERGLASS INST PANEL INSTL	912-05100-01	Fiberglass - Painted grey or primed upon request	\$ 999.00
CARBON INST PANL INSTL, SP	912-05100-01C	Carbon - Painted grey or primed upon request	\$ 1,299.00

NOTE: Instrument panels do not come precut for avionics inserts.

COSMETIC CARBON INST PANL INSTL, SP	912-05100-01CC
-------------------------------------	----------------





# PRODUCT CATALOG

## Trike Kits

TUNDRA NOSE FORK WITH TIRE-INCLUDES THE MAIN 800X6 TIRES AND TUBES	039-08110-01	Includes Tundra fork, axle, hub, bushings, nose wheel assembly, 6x6 tire & tube for nose, 8x6 tires and tubes for mains, associated hardware	\$ 2,350.00
600X6 TD TO TRIKE CONVERSION	039-01415-01	Includes nose gear fairings, nose wheel pant, nose strut, hub, axle, fork, wear pads, towbar attach bracket, wheel assembly, 5x5 tire & tube nose, associated hardware	\$ 5,200.00
TD TO TUNDRA TRIKE CONVERSION	039-01465-01	Includes nose strut, Tundra hub, axle, Tundra fork, wear pads, towbar attach bracket, wheel assembly, 6x6 tire & tube (for nose), associated hardware. Does Not include Main tires or Tubes	\$ 4,800.00
TRICYCLE TAIL STRIKE KIT	937-05000-01	Includes brackets, strike wheel and hardware	\$ 75.00

## Tail Dragger Kits

TUNDRA TD INSTALL - SPORTSMAN	039-01450-01	Sportsman - Includes T3 tailwheel & caster assy (all springs, hardware, etc.), double puck wheel & brake kit, main wheel install. Does not include Main tires or tubes	\$ 6,100.00
TRIKE TO TD CONVERSION - SPORTSMAN	937-01000-01	Kit includes: T3 tailwheel suspension, tailwheel assy, steering spring set, cable assy & various hardware to install	\$ 3,600.00
TRIKE TO TD CONVERSION - GLASTAR	937-01000-02	Same as 937-01000-01 but for Glastar	\$ 3,600.00
TRIKE TO 6X6 TD CONVERSION - GLASTAR	937-01200-01	Same as 937-01000-02 but with the addition of 6/8x6 wheels, brakes, 6x6 tires & tubes, main gear axle sleeves and brake flange weldments	\$ 6,100.00
TRIKE TO 6X6 TD CONVERSION - GLASTAR	937-01100-01	Same as 937-01200-01 just with 8x6 Tires and Tubes	\$ 6,300.00

## Wheel Kits

NOSE GEAR, 5X5 WHEEL INSTALL	039-05110-01	Sportsman Kit - Includes nose wheel assy, tire, tube, wear pads, towbar attach bracket, nose fork assy, axle and associated hardware	\$ 1,700.00
MAIN GEAR, 6X6 WHEEL INSTALL	039-04105-01	Sportsman Kit	\$ 2,750.00
MAIN GEAR, 8X6 WHEEL INSTALL	039-08100-01	Sportsman Kit	\$ 2,950.00
5X5 MAINS TO 6X6 MAINS - GLASTAR	937-03100-01	Includes a Grove 6/8x6 wheel and brake set, 6x6 tires and tubes, axle flange weldments, axle spacers and sleeves. All installation hardware is included.	\$ 2,750.00
5X5 TD TO 6X8 TD - GLASTAR	937-03000-01	Same as 937-03100-01, but with 8x6 Tires and tubes	\$ 2,950.00

## Gear Legs

MAIN GEAR LEG INSTALL - GLASTAR	937-04000-01	Includes landing gear legs, brake flange & associated hardware	\$ 1,500.00
MAIN GEAR LEG INSTALL - SPORTSMAN	039-04100-01	Includes landing gear legs, brake flange & associated hardware	\$ 1,700.00
3" EXTENDED GEAR LEGS	039-04101-01	Includes landing gear legs, axles & hardware	\$ 2,150.00
3" EXTENDED GEAR LEGS	039-04101-02	Includes landing gear legs, axles & hardware	\$ 2,150.00

# PRODUCT CATALOG

## Floats

FLOAT INSTALLATION PRICE		Starting installation price for Glasair to install your new floats	STARTING AT \$8,000
FRONT FLOAT FITTINGS - CLAMAR	552-01001-02	Qty needed 2	\$ 249.00

## MISC. Landing Gear Parts

6x6/8 WHEEL AND BRAKE SET	090-00601-01		\$ 2,150.00
DOUBLE PUCK WHEEL AND BRAKE SET	090-00602-01		\$ 2,400.00
BRAKE LINE UPGRADE KIT	991-03000-201		\$ 320.00
GEAR LEG FAIRINGS KIT	039-04460-01		\$ 200.00
3" EXT GEAR LEG FAIRING KIT	039-04460-03		\$ 220.00

## Tires and Tubes

GENERIC* 5.00 X 5 MAIN WHEEL TIRE	800-0660-001	Qty needed 2	\$ 105.00
GENERIC* 6.00 X 6 MAIN WHEEL TIRE	080-06060-01	Qty needed 2	\$ 110.00
GENERIC* 8.00 X 6 MAIN WHEEL TIRE	080-08060-01	Qty needed 2	\$ 220.00
GENERIC* 11.4 X 5 NOSE WHEEL TIRE	800-0655-001	Qty needed 2	\$ 80.00
5.00 X 5 MAIN WHEEL TUBE PART NO.:	800-0675-001	Qty needed 2	\$ 90.00
6.00 X 6 MAIN WHEEL TUBE PART NO.:	080-06075-01	Qty needed 2	\$ 90.00
8.00 X 6 MAIN WHEEL TUBE PART NO.:	080-08075-01	Qty needed 2	\$ 90.00
11.4 X 5 NOSE WHEEL TUBE PART NO.:	800-0670-001	Qty needed 2	\$ 50.00

## Alaska Bushwheel Tires

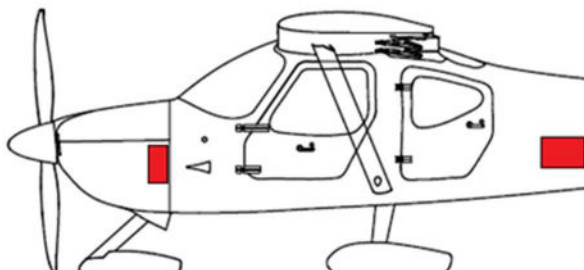
26"	080-08026-03	Qty needed 2, w/ black valve stems	\$ 1,500.00
29"	080-08029-01	Qty needed 2, w/ black valve stems	\$ 1,700.00
31"	080-08031-01	Qty needed 2, w/ black valve stems	\$ 1,900.00

## Wheel Pant Kits

6x6 MAIN WHEEL PANT INSTALL KIT	937-01475-01		\$ 1,150.00
NOSE GEAR, 5X5 WHEEL PANT	039-04880-02		\$ 400.00
NOSE GEAR FAIRING KIT	039-08120-01		\$ 250.00

## Battery Configuration

BATTERY INSTALLATION, FWF, STANDARD ODYSSEY (10-360 AND SMALLER ENGINES)	042-05100-01		\$ 400.00
BATTERY INSTALLATION, TAIL, STANDARD ODYSSEY (10-360 AND SMALLER ENGINES)	042-05100-03		\$ 425.00
BATTERY INSTALLATION, FWF, LARGE (TD) ODYSSEY	042-05100-02		\$ 450.00
BATTERY INSTALLATION, AFT, LARGE (TRIKE) ODYSSEY	042-05100-04		\$ 525.00
BATTERY INSTALLATION, FWF, EARTH X (TRIKE OR TD)	042-05100-07		\$ 625.00
BATTERY INSTALLATION, AFT, EARTH X (TRIKE OR TD)	042-05100-08		\$ 600.00



# PRODUCT CATALOG

## Landing light Kits

AEROLED LANDING LIGHT & NAV STROBE WINGTIP INSTALL	039-04440-01	Includes LED NAV Strobes & install kit, AEROLED landing lights & install kit, lens, bracketry for wing tip, heat shrink & associated hardware and electrical connections	\$ 2,145.00
LED LANDING LIGHT KIT (RETRO KIT)	921-04100-07	Includes AEROLED landing lights, and an install kit to adapt it to the old bracketry already in your wing tips	\$ 1,145.00
LED LANDING LIGHT KIT (FRESH INSTALL)	921-04100-06	Includes AEROLED landing lights, lens and an install kit for a fresh install into wing tips.	\$ 1,299.00
HALOGEN WINGTIP LIGHT INSTALL KIT	921-04100-04		\$ 500.00
LED NAV / STROBE KIT, (2PER)	210-0600-243		\$ 1095.00
FAIRING, WINGTIP, LWR, LT	201-20001-03		\$ 170.00
FAIRING, WINGTIP, LWR, RT	201-20001-04		\$ 170.00
FAIRING, WINGTIP, UPR, LT	201-20002-01		\$ 170.00
FAIRING, WINGTIP, UPR, RT	201-20002-02		\$ 170.00
BONDED WINGTIPS		Includes Wingtips bonded together	\$ 1,200.00
LENS, WINGTIP LIGHT, LH, SP	921-04107-04		\$ 85.00
LENS, WINGTIP LIGHT, RH, SP	921-04107-05		\$ 85.00

## Wings

HEATED PITOT STATIC INSTALL - W/O PITOT HEAD	912-02000-01		\$ 325.00
WING FOLD KIT	039-04860-01		\$ 350.00
DELTA WING VORTEX GENERATORS	039-04420-01		\$ 195.00

## Ailerons

SERVO, AILERON ELEC TRIM 1/2"	921-01100-04		\$ 375.00
AILERON TRIM TAB, 14" SUB-ASSY	201-15025-01		\$ 375.00
AILERON ANTI SERVO KIT	921-06100-01	Includes push rod, fwd spar, aileron servo tab sub assembly and associated hardware	\$ 450.00
AILERON ELEC. TRIM KIT	921-06200-01	Includes Servo, doubler, cover, trim tab assy, push rod, fwd spar and associated hardware and electrical components.	\$ 625.00

## Flaps

BEARING ROLLER FLAP	017-00002-01	Qty needed 8	\$ 11.00
BUSHING, FLAP TRACK ROLLER BEARING	201-10008-01	Qty needed 8	\$ 22.00
BUSHING, FLAP TRACK	201-10059-01	Qty needed 16	\$ 9.00

## Horizontal

HORIZONTAL STABILIZER LEADING EDGE RUBBER COVER	101-01200-08	Pair	\$ 480.00
HORIZONTAL STABILIZER, TIP FAIRING	302-00014-01C	Qty needed 2	\$ 100.00
HORIZONTAL CLOSE-OUT, TIP FAIRING	302-00015-01C	Qty needed 2	\$ 70.00

## Elevator

ELEVATOR FAIRING, TIP	303-00014-01C	Qty needed 2	\$ 200.00
-----------------------	---------------	--------------	-----------

# PRODUCT CATALOG

## Rudder

RUDDER FAIRING, TIP LEFT	301-00015-01C	\$ 79.00
RUDDER FAIRING, TIP RIGHT	301-00015-02C	\$ 79.00

## Options

BRS SAFETY CHUTE INSTALL	910-1000-101	Installation price	\$ 35,000.00
BRS CHUTE KIT	910-1000-201	Parts to install only	\$ 27,000.00
TOWBAR TAILDRAGGER	471-0645-102		\$ 347.00
TOWBAR TRIKE KIT	471-0645-202		\$ 395.00
DIMMABLE CABIN LAMP (EACH)	210-00050-01		\$ 90.00
4 SWITCH STICK GRIP	621-1470-001	SAME FOR PILOT AND COPILOT - TOSTEN GRIP	\$ 250.00
CARGO POD, SP, NOT PAINTED	950-01000-02		\$ 5250.00
CARGO POD, SP	950-01000-01	Installation price	\$ 8350.00
UPPER SPEED FAIRING KIT, HIGH GROSS WEIGHT	201-20104-101	Includes upper strut fairings & flap track fairings	\$ 350.00
UPPER SPEED FAIRING KIT, LOW GROSS WEIGHT	201-20004-101	Includes upper strut fairings & flap track fairings	\$ 340.00
PARKING BRAKE KIT, DUAL, NYLON	991-03000-601		\$ 435.00
PARKING BRAKE KIT, DUAL, SS	991-03000-602		\$ 650.00



TAIL PULL HANDLE	101-01400-01		\$ 445.00
TAIL PULL HANDLE INSTALLATION	042-14000-11	Installation price	\$ 1000.00



# PRODUCT CATALOG



TAILDRAGGER SIDE STEP  
TRICYCLE SIDE STEP KIT

201-20007-101  
201-20005-301



Installation price. Need Gear legs to install  
Primed, not painted. Comes with rubber grips

\$ 1200.00  
\$ 600.00

## Fuel System

ANDAIR VALVE KIT	922-08100-01		\$ 660.00
HEADER TANK KIT	038-03500-01		\$ 710.00
FUEL TANK INSTL., AUX	933-01000-04	Includes both aux tanks, fuel sending units, flush fuel caps, aluminum fuel line, AN fittings, nylon vent lines, CAV 110s, & hardware	\$ 3,650.00
FUEL CAP ASSY, FLUSH, GS	201-40003-01		\$ 80.00
FUEL INJECTED BOOST PUMP, AIRF	330-8200-001		\$ 950.00

## FWF Kits

OIL COOLER INSTL. LYC. GS 0360	922-06000-01		\$ 1,300.00
OIL COOLER INSTL. LYC 10390 SP	922-06050-01	Includes newly designed oil cooler shroud	\$ 2,300.00
BAFFLING INSTL., GLASTAR 180	922-05000-01		\$ 1,400.00
BAFFLING INSTALL, SP 10360	922-05000-02		\$ 1,500.00
BAFFLING INSTL., SP 10390	922-05500-01		\$ 1,500.00
BAFFLING INSTL., SP 10390 CARBON	922-05500-01C		\$ 1,600.00
INDUCTION KIT 10360 SILVERHAWK	922-07100-02		\$ 440.00
INDUCTION KIT 10390 SILVERHAWK	922-07100-01		\$ 440.00
4000 FWF HOSES INSTL INJECTED	039-07100-02		\$ 1,350.00
FUEL PUMP COOLING SHROUD INSTL	331-0165-501		\$ 275.00
MAG COOLING ASSY	042-07000-08		\$ 55.00
ENG MNT INSTL, TYPE I	922-01100-01		\$ 2,400.00
SHOCK BUSHING INSTL, GA 200/GS	222-4011-501	Needed with Engine mount kit to install your engine	\$ 475.00
ORCOTEK FIREWALL BLNKT KIT	830-0102-017		\$ 340.00
COWLING INSTL, NUTPLATE, SP	930-03000-01	Upper & lower cowling, oil access door & hardware	\$ 2,200.00
COWLING INSTL, NUTPLATE, SP CARBON	930-03000-01C	Upper & lower cowling, oil access door & hardware	\$ 2,800.00
BRACKET INSTL, ENG CNTRL, 0360	922-08000-01		\$ 225.00
ENG CNTL KIT S-HAWK 10360/390	922-08500-01		\$ 225.00
BRACKET INSTL, PROP CONTROL	922-09000-01		\$ 125.00
CABLE, MIXTURE A-750 48" RED	180-75048-01		\$ 109.00

# PRODUCT CATALOG

CABLE, PROP CONTROL 48" A-750,	180-75048-02		\$ 109.00
CABLE, PROP CNTL, 72" A-750, B	180-75072-01		\$ 135.00
CABLE, MIXTURE, 60" A-750, RED	180-75060-02		\$ 120.00
CABLE, THROTTLE A-800, BLACK,60	180-80060-01		\$ 145.00
CABLE, THROTTLE VERNIER-ASSIST	180-80048-02	48" LENGTH MCFARLANE	\$ 235.00

## Typical FWF Kits

FUEL INJECTED BOOST PUMP, AIRF	330-8200-001
OIL COOLER INSTL. LYC IO390 SP	922-06050-01
BAFFLING INSTL., SP IO-390	922-05500-01C
INDUCTION KIT IO390 SILVERHAWK	922-07100-01
ENG CNTL KIT S-HAWK IO360/390	922-08500-01
4000 FWF HOSES INSTL INJECTED	039-07100-02
CABLE, PROP CNTL, 72" A-750, B	180-75072-01
CABLE, MIXTURE, 60" A-750, RED	180-75060-02
CABLE, THROTTLE A-800,BLACK,60	180-80060-01
EXHAUST, POWERFLOW REDESIGN	504-05400-01

## Interior Kits

DEFROST MANIFOLD KIT	930-05000-03		\$ 125.00
GLARESHIELD INST KIT, SP	930-05000-01		\$ 335.00
MAGNETOMETER INST KIT, FUSE	201-00700-103		\$ 55.00
SEAL KIT, SPAR & CABLE	962-02000-01		\$ 265.00
CABIN AIR VENT KIT G-S	938-02000-01		\$ 410.00
CABIN AIR VENT KIT G-S CARBON	938-02000-01C		\$ 475.00
CABIN HEAT VALVE INSTALL KIT - SP	471-0810-201		\$ 450.00
CABIN HEAT VALVE INSTALL KIT - GS	938-03000-01		\$ 450.00
SEAT PAN INSPECTION COVER KIT	302-0252-201		\$ 85.00
SEATBACK SLIDER, INSTL, SP & G	802-01000-101		\$ 1000.00
MAIN DOOR INSTALL KIT	039-04200-01		\$ 3,400.00
MAIN DOOR INSTALL KIT	039-04200-01C		\$ 3,800.00
DOOR RETROFIT FIXTURE (OLD STYLE)	981-05030-01	Loaner tool to install main doors on Glastar \$1,000 deposit	\$50 rental fee
DOOR LOCK/KEY IGNITION KIT G-S	921-03000-01		\$ 350.00
REAR FACING SEAT, SP GREY	042-08000-02G	minimum 3 month lead time upon purchase.	\$ 5495.00
UPHOLSTERY SET, SPORTSMAN GREY	930-07000-01	minimum 3 month lead time upon purchase.	\$ 4495.00
REAR FACING SEAT, SP 2020R	042-08000-02	minimum 3 month lead time upon purchase.	\$ 5495.00
FWD UPHOLSTERY SET, 2020R	874-00000-001	minimum 3 month lead time upon purchase.	\$ 4995.00
FWD TUNNEL COVER KIT, 4 WAY AN	962-03000-01		\$ 430.00
FWD TUNNEL COVER KIT, 4 WAY AN	962-03000-01G		\$ 430.00
SEAT BELT ANCHOR PT KIT, BOLT-	930-07300-101		\$ 450.00
SEAT BELT ANCHOR PT KIT, BOLT-	930-07300-101GS		\$ 440.00
SEAT BELT ANCHOR PT KIT, INTEG	930-07200-101		\$ 250.00
SEAT BELT ANCHOR PT KIT, LEGAC	930-07200-201		\$ 250.00
SHOULDER HARNESS CROSSBAR RETR	930-07300-201		\$ 430.00
INERTIAL REEL INSTL KIT BLACK	930-07200-301		\$ 950.00
INERTIAL REEL INSTL KIT GREY	930-07200-301G		\$ 950.00

# PRODUCT CATALOG

## Terms and Conditions

All items are subject to availability. Some items have associated lead times, meaning time is required between order and delivery for the product to be fabricated or obtained from our vendors; please schedule your orders accordingly.

All prices and kit descriptions are subject to change without notice. Please call us to confirm current pricing and availability.

Payment Methods include, check, money order, cashier's check, VISA, MasterCard, Discover Card, ACH transfer, Wire Transfer (request wire transfer instructions)

All shipping is via UPS ground unless otherwise requested. Freight is typically shipped via PILOT or YRC. Coordinating your own freight is encouraged.

All returns are a 15% restocking fee and items must be returned in 'as new' condition.

Any shortages or incorrect parts must be reported immediately.

Ordering by Phone - 360-435-8533

Or contact sales via email at [support@glasairaviation.com](mailto:support@glasairaviation.com)